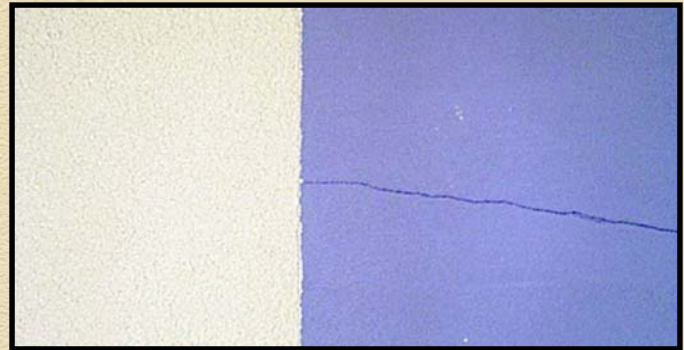


# SELECT FLEX™

**TEXTURED, ELASTOMERIC FINISH**

- Durable
- Long Lasting Beauty
- Variety of Textures
- Custom Colors
- Breathable
- U.V. Resistant
- Bridges Hairline Cracks
- Trowel or Spray Apply



**RESIDENTIAL    COMMERCIAL**  
**INDUSTRIAL    MUNICIPAL**  
**MEDICAL        AGRICULTURAL**

- WALLS**
- ROOFS**
- TANKS**
- DUCTS**
- PIPES**
- CONCRETE**
- METAL BUILDINGS**
- TRUCKS & TRAILERS**

## **SPECIFICATIONS**

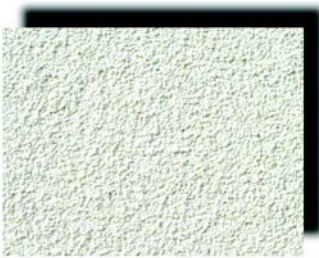
<b>TEST</b>	<b>METHOD</b>	<b>RESULTS</b>
Flexibility	ASTM D-522	Pass
Surface Burning	ASTM E-84	Class A (15 Flame Spread, 25 Smoke)
Adhesion	ASTM C-297	> 95 to Concrete
Mildew Resistance	ASTM D-3273	No Growth
Freeze-Thaw Resistance	ASTM D-2243	Pass
Wind Driven Rain Resistance	TT-C-555B (a)	Pass - No Penetration
Water Absorption, 0.2 lbs. max. Rear face dampness		0.06 pounds None
Weatherability - 2000 hours	ASTM G-53	No Cracking
Low Temperature Cracking	ASTM D-522	None - Flexibility Maintained
Tensile Strength	ASTM D-412	115 psi
Dirt Pickup Resistance	Lab Method	89% Reflectance Retained
Elongation	ASTM D-412	200%
Flexibility	ASTM D-522	Pass
Water Vapor Permeability	ASTM D-1653	>34 U.S. Perms
Peel Adhesion	ASTM C-794	Pass
Dry		20 lbs. per Linear Inch
Wet		5 lbs. per Linear Inch

**SELECT FLEX™** uses advanced polymer technology along with the highest quality materials to create a flexible, long-lasting finish that adds value and durability to any project.

Easily applied by qualified contractors, **SELECT FLEX™** requires minimal maintenance. The flexibility and crack-bridging qualities of **SELECT FLEX™** insure homeowners' satisfaction well into the future.

**SELECT FLEX™** flexible, textured finish provides the value-added solution for exterior and interior applications. Fast application time and excellent coverage make for an economical advantage from start to finish.

*Quality Coatings, Quality Results*



**White**  
SF WH



**Tan**  
SF TN



**Navajo**  
SF NJ



**Khaki**  
SF KI



**Autumn**  
SF AT



**Lavender**  
SF LV



**Adobe**  
SF AB



**Oyster**  
SF OY



**Clay**  
SF CY



**Almond**  
SF AL



**Malt**  
SF MT



**Champagne**  
SF CP

## PROPERTIES

Select Flex™ is a protective enhancement and decorative coating to stucco and concrete wall surfaces. Select Flex™ is formulated to provide all the beauty and properties of a fine acrylic elastomeric finish plus high-tech pigments with ceramic spheres to reduce wall temperatures to provide cooling load savings and added fire retardancy. The elastomeric properties of Select Flex™ will bridge most hairline cracking that commonly occurs in stucco products providing you with a beautiful long lasting finish that remains flexible. Select Flex™ comes ready to use, requiring no additives, and because it is acrylic-based it will demonstrate excellent adhesion and weather resistant properties. Only non-chalking rutile titanium dioxide and a highly effective mildewcide is used in making Select Flex™ to better assure ongoing clean, bright colors under the most severe exposure conditions. Select Flex™ is available in Complete Coatings' standard or any custom color of your choosing. Select Flex™ is packaged in 65 pound/5 gallon pails with easily removable lids. There are thirty-six pails per pallet, which come banded and stretch wrapped.

## DIRECTIONS

Select Flex™ coverage will vary depending on the type of texture used, porosity of the substrate as well as application techniques. Approximate average coverage is 10 to 12 yards per pail. Surfaces to be coated must be clean, dry, structurally stable and free of efflorescence, loose material, paint and other coatings. It is recommended that cement-based substrates be allowed to cure for 7 to 28 days prior to application. Some substrates such as stucco and concrete may need to be coated with Complete Coatings Tinted Primer at the rate of 150 to 250 ft<sup>2</sup> per gallon. Tinted primer should be dry to the touch before applying Select Flex™.

Select Flex™ should be thoroughly mixed to a workable and uniform consistency using a clean, rust free electric drill and paddle. A small amount of clean water may be added to adjust workability. Select Flex™ is to be applied and leveled uniformly and simultaneously with a clean, stainless steel trowel or spray-applied. A wet edge is to be maintained on Select Flex™ by applying and texturing across the wall to joints, corners or other defined breaks. Do not allow material to set up on an uninterrupted area of the wall without reaching a defined joint, corner or other wall break.

Select Flex™ has a two (2) year shelf life in an unopened container that has been stored out of direct sunlight and extreme temperatures. Do not allow Select Flex™ to freeze or be exposed to extreme heat. Material that has been frozen is not usable. Please consult Complete Coatings at the number to the left if you have any special concerns or application needs that may be out of the ordinary.

SELECT FLEX™ is manufactured by:



A Division of InCide® Technologies, Inc.  
50 North 41<sup>st</sup> Avenue  
Phoenix, AZ 85009-4618

Phone: 602-233-2961, 1-800-777-4569  
Fax: 602-272-4864  
Web: [www.incidetech.com](http://www.incidetech.com)

*\*Complete Coatings makes no warranty as to exact duplication of the above colors due to variable circumstances over which Complete Coatings has no control. All colors shown approximate actual colors as accurately as possible. Color will be influenced by texture, porosity and color being covered. Please request a project sample before making final color selection. All colors are available from the factory and authorized distributors.*